

Sensa-Bloc II™

Installation Instructions

Please read these instructions completely before beginning your installation. For best results, use filtered, regulated, DC voltage. The Power Regulator Board is designed for this application.

Sensa-Bloc II™ is used to sense occupation of a block of track. It senses current flow from the throttle to the occupied block of track and uses this current flow to turn on an LED. Figure 1 shows the connections to the **Sensa-Bloc II™**.

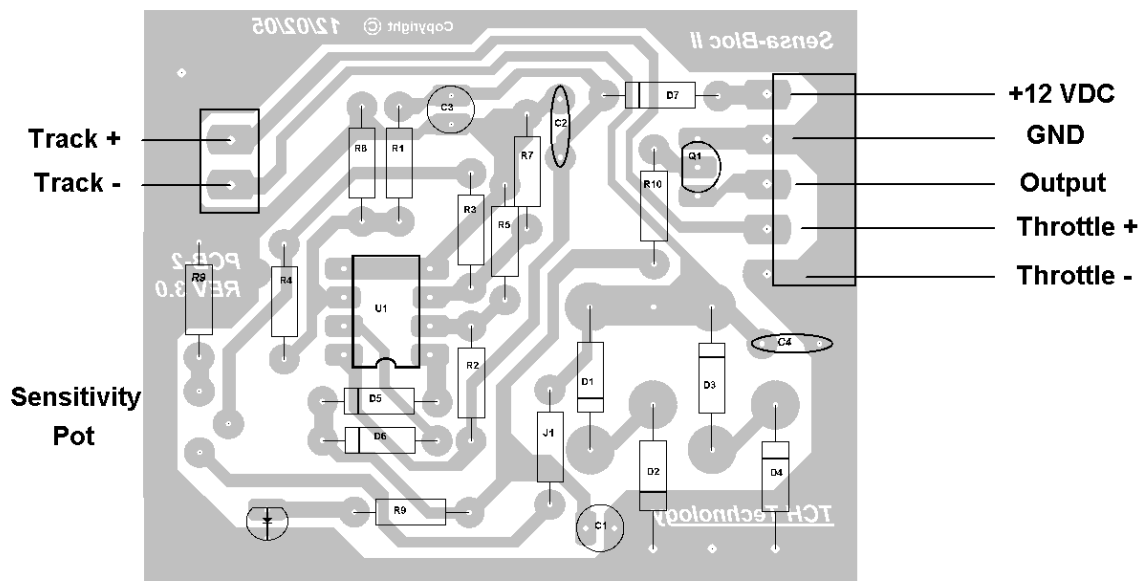


Figure 1.

Adjusting Sensitivity

The **Sensa-Bloc II™** has an onboard LED used for adjusting the sensitivity. Using the resistor that is supplied with the **Sensa-Bloc II™**, lay it across the rails of the track. Adjust your throttle to a normal running speed, without a locomotive on the track. If you are using the resistor and supplying AC voltage to the **Sensa-Bloc II™s** do not turn up throttle. Turn the sensitivity control until the LED on the **Sensa-Bloc II™** goes out. Now turn the control slowly the other way until the LED lights. Remove the resistor and the LED should go out. The **Sensa-Bloc II™** is sensitive enough to detect your finger on the rail. It is important that you adjust the **Sensa-Bloc II™** properly.

Note: The circuit described in this instruction sheet has been tested under a variety of conditions, however, it is impossible to foresee and test under all circumstances to which the circuit may be subjected. Furthermore, many performance aspects are directly linked to the physical layout of the components and the method of connections.